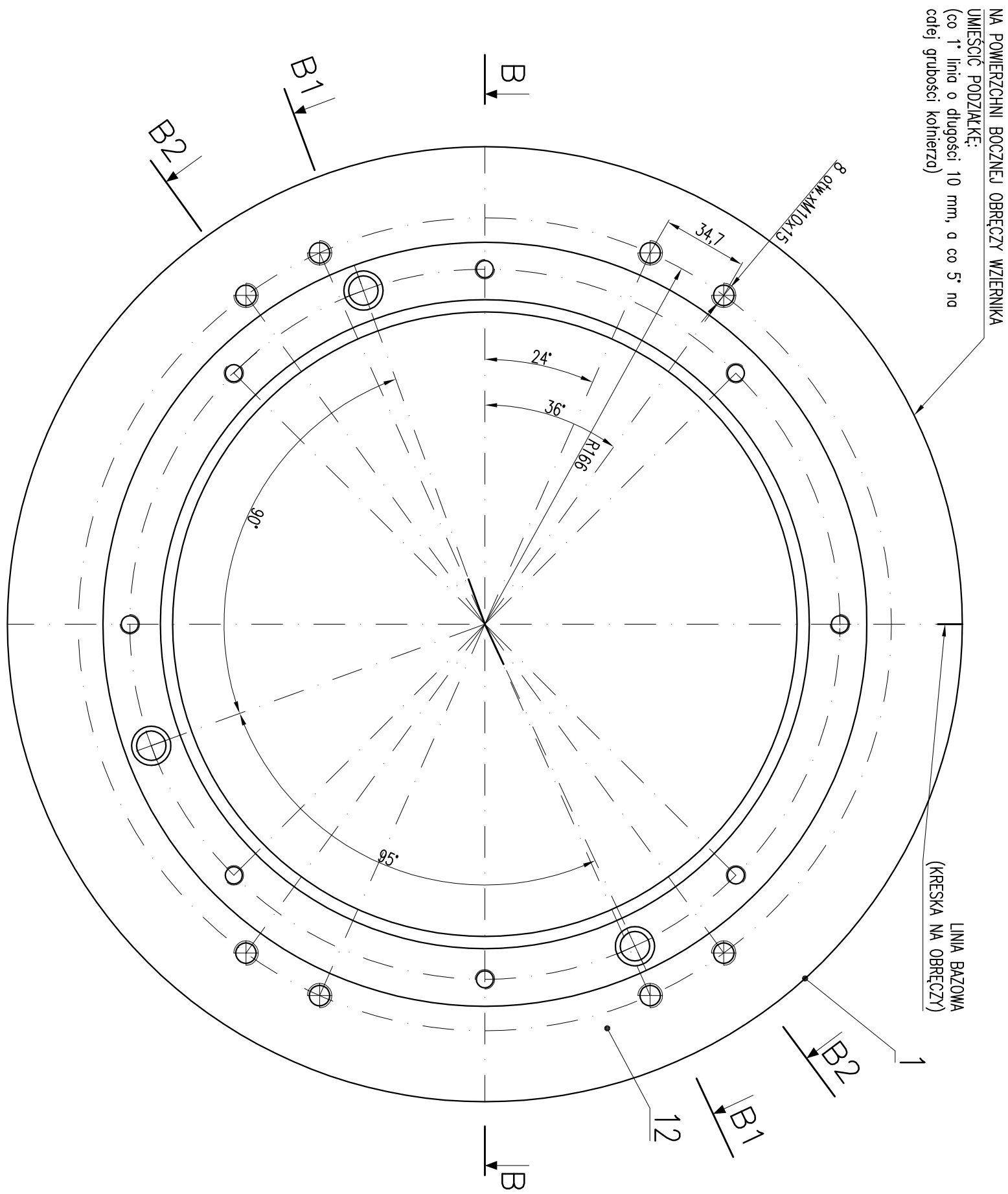


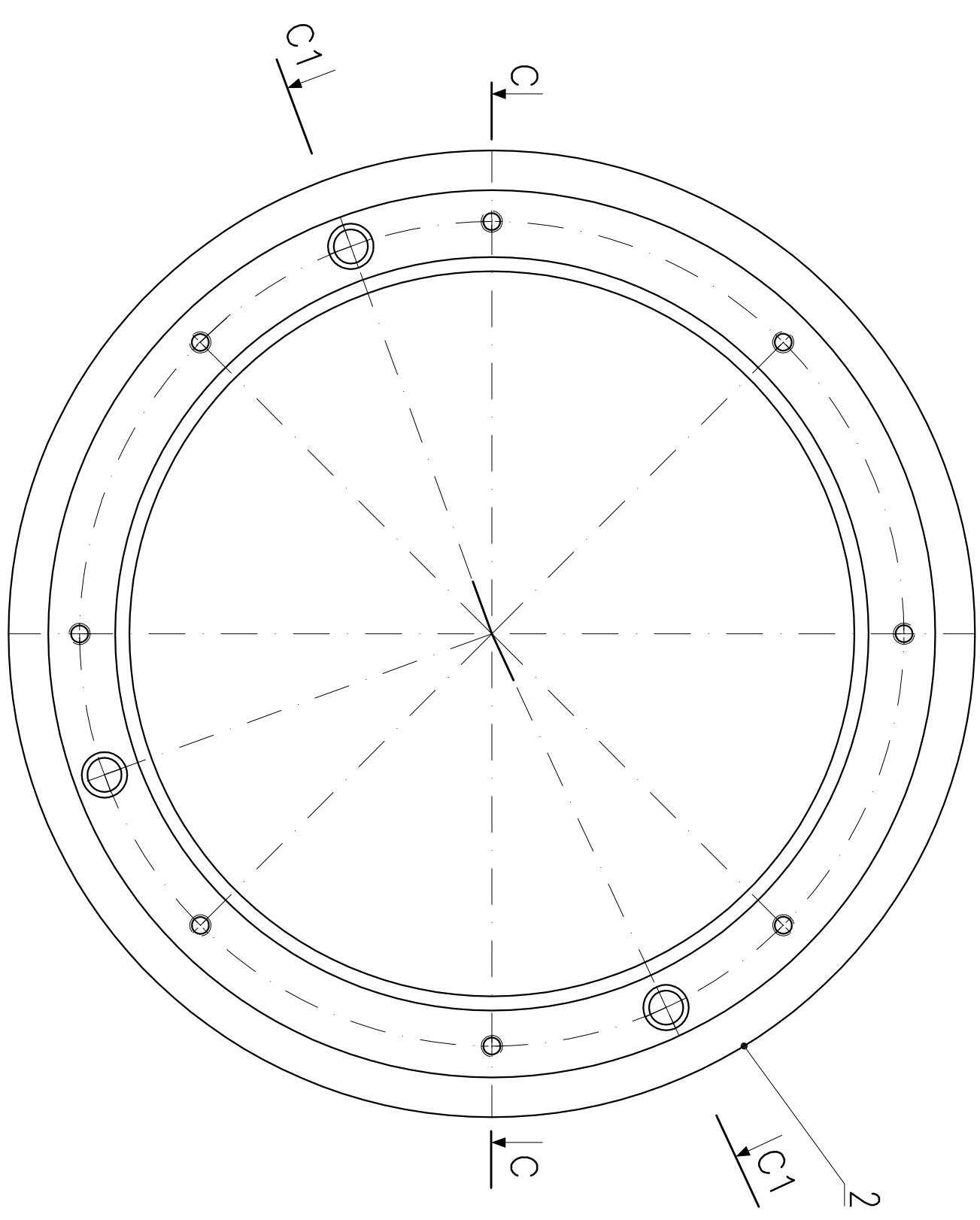
Poz.1 1/2/

OBRĘCZ ZEWNĘTRZNA WZIERNIKA NR1



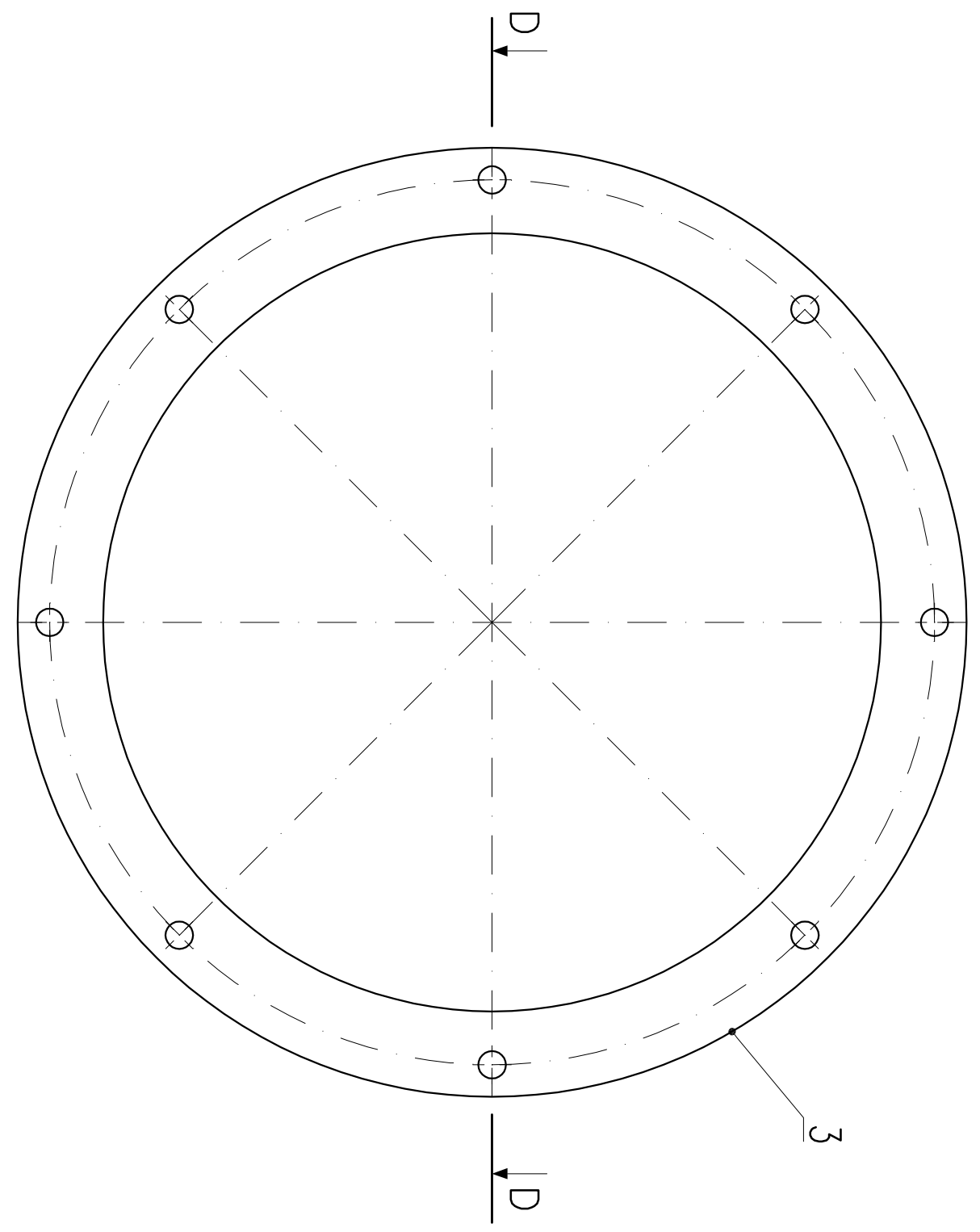
Poz.2 1/2/

OBRĘCZ ZEWNĘTRZNA WZIERNIKA NR2

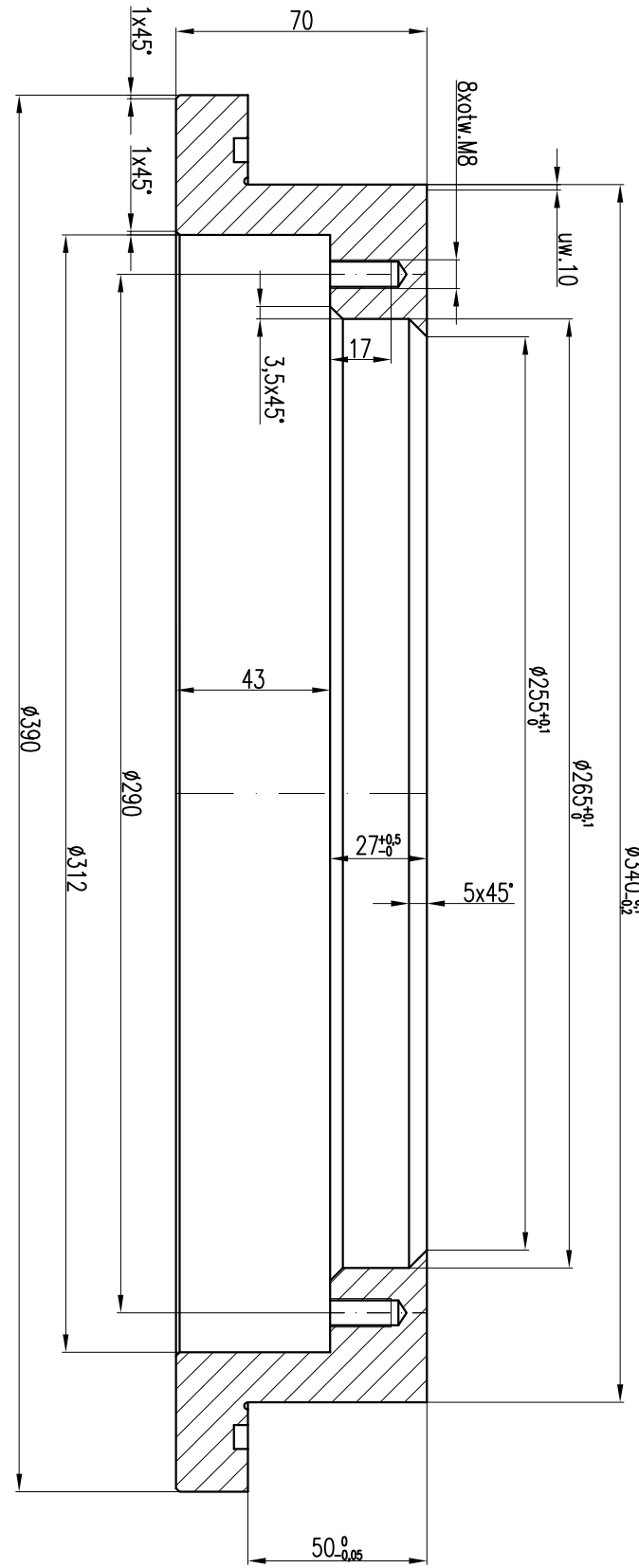


Poz.3 1/2/

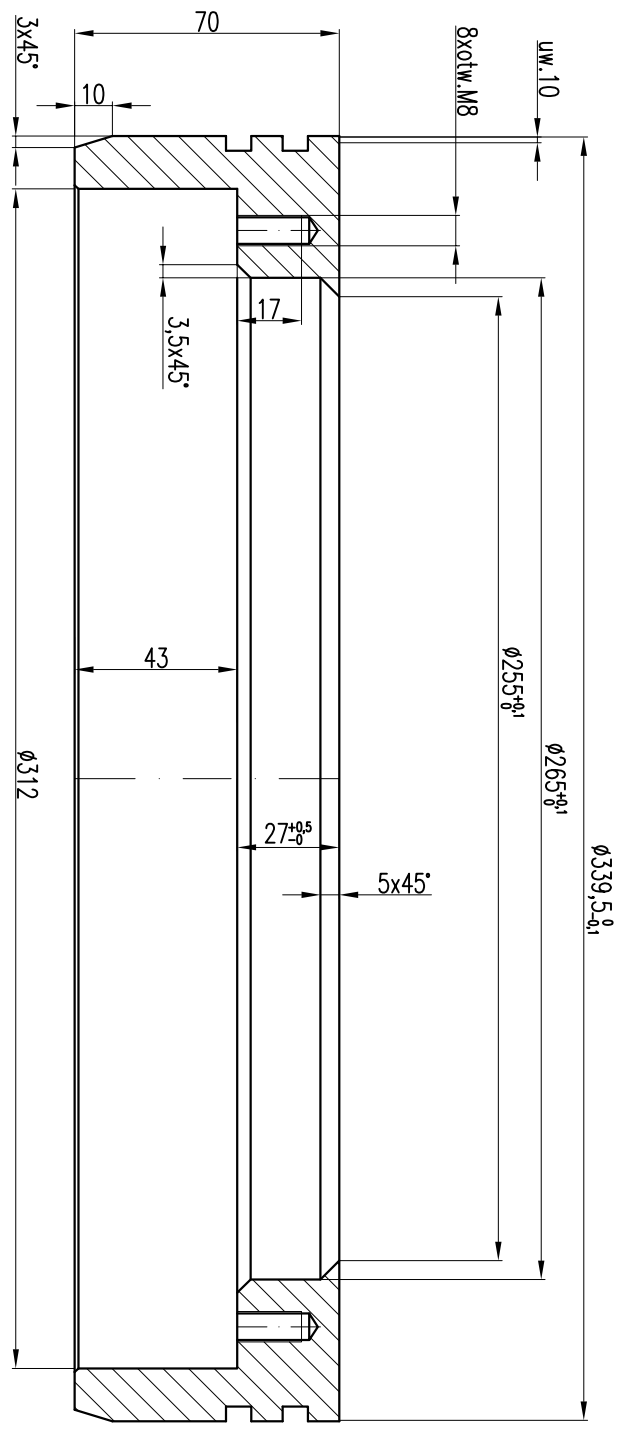
OBRĘCZ WEWNĘTRZNA WZIERNIKA NR1 i NR2



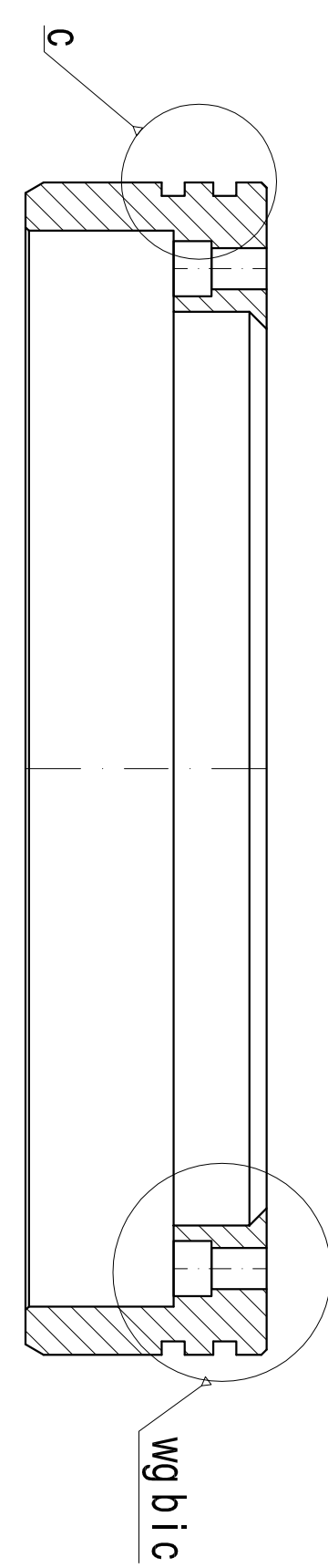
B-B



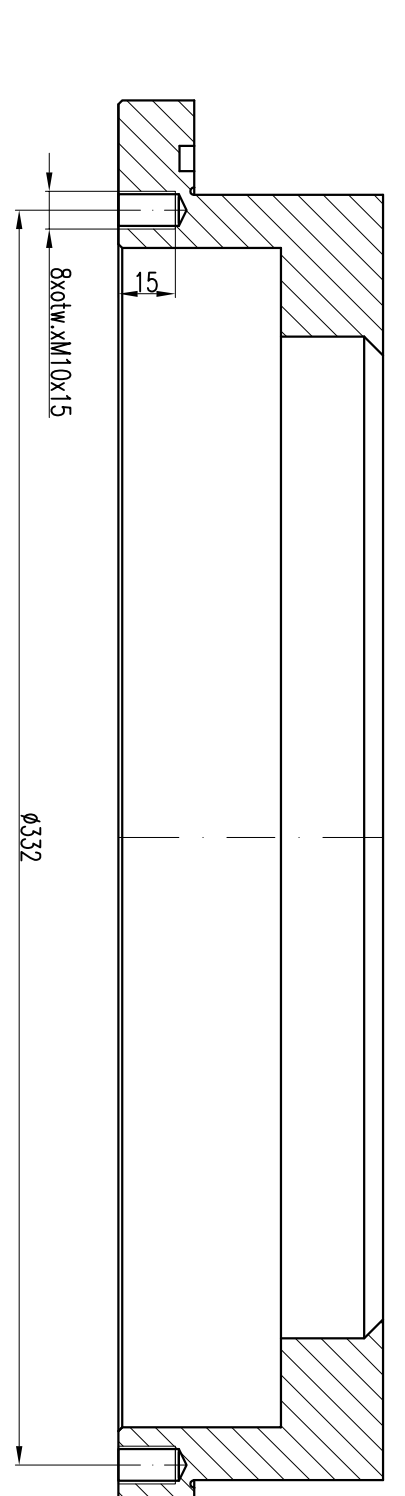
C-C



C1-C1

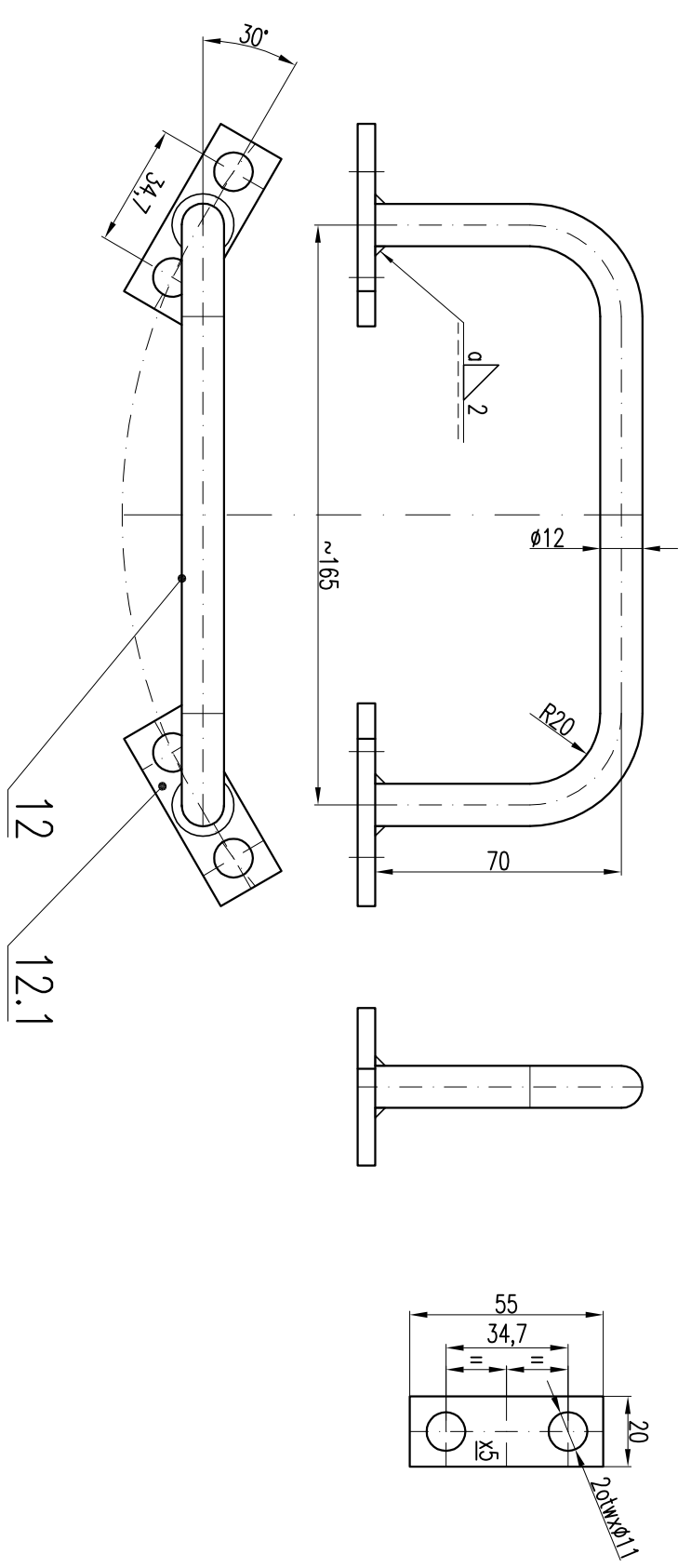


B2-B2



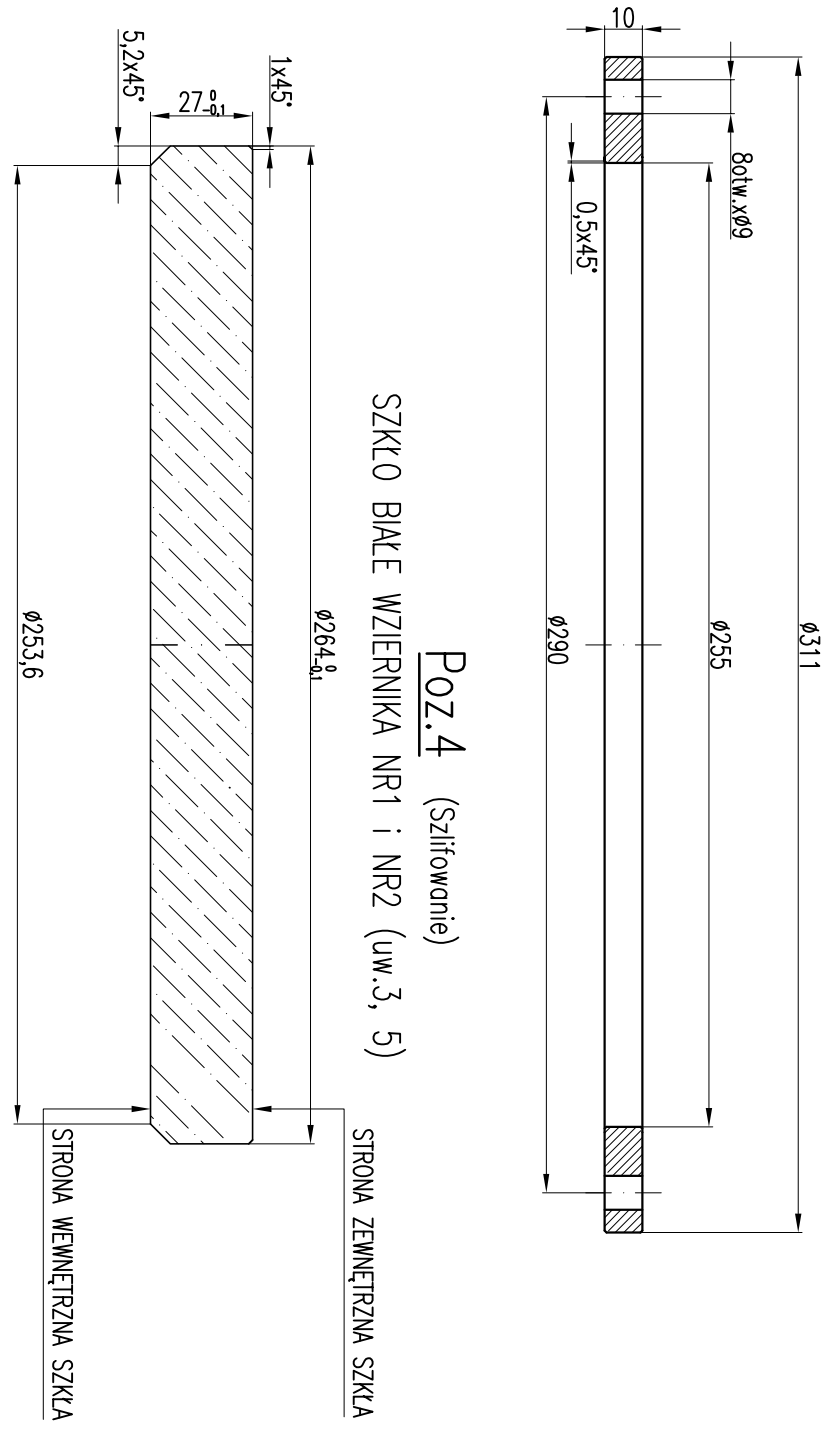
Poz.12, 12.1

UCHWYT I STOPKA UCHWYTU



Poz.4 (sifonowe)

SZKŁO BIAŁE WZIERNIKA NR1 i NR2 (uw.3, 5)



Poz.16

